

## 14. Северный полюс

Allegro  $\text{♩} = 160-176$ 

6

*ff* *f*

11 ( $\text{♩} = \text{♩}$ ) 4 *Soli* *f*

19 7 3 6

*f*

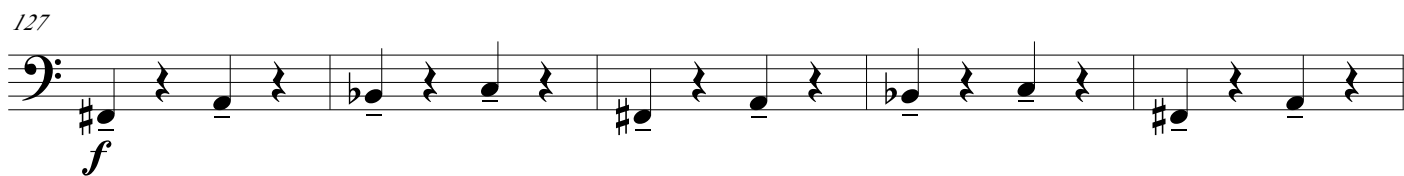
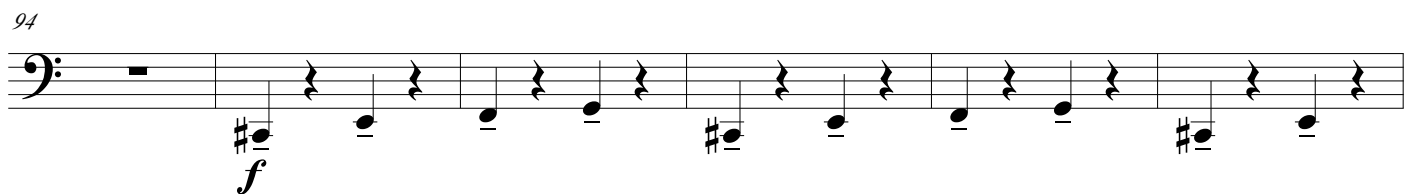
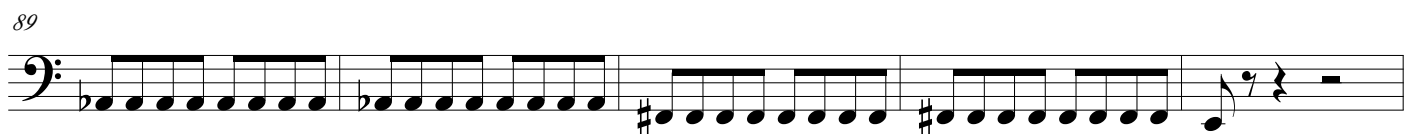
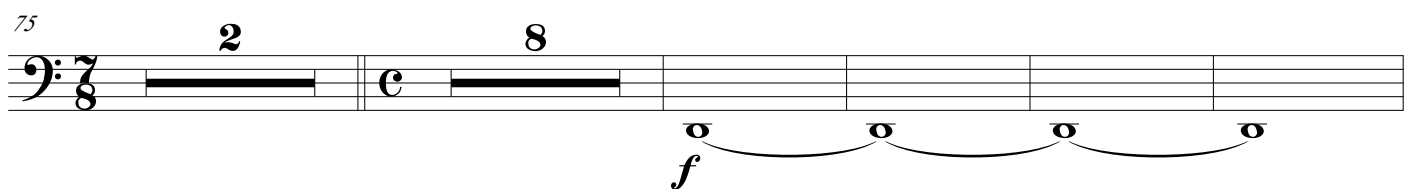
32 9 *f*

45

49 *f*

53

57 *ff*



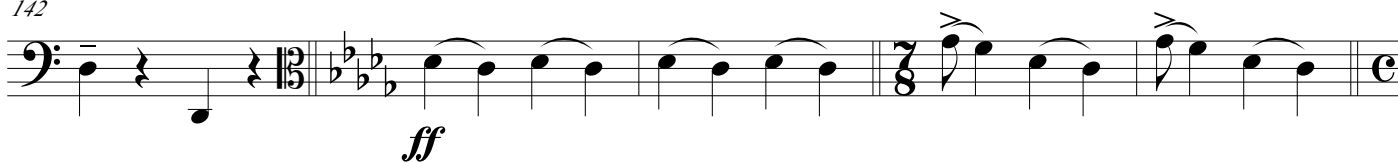
132



137

 $(\text{♩} = \text{♩})$ 

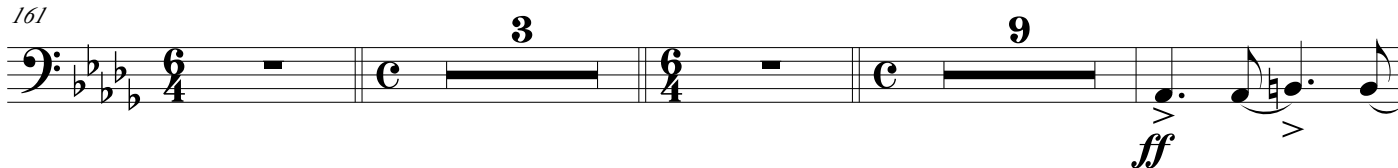
142



147



161



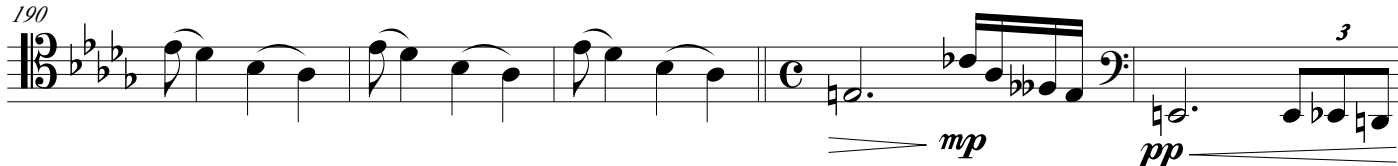
176

 $(\text{♩} = \text{♩})$ 

181



190



195

